

**STUDENT SERVICES &  
INSTRUCTIONAL BUILDING**

**Contact:**

Cal Erwin-Svoboda  
vpss@ghc.edu  
360-538-4066



**YOUR COMMUNITY. YOUR COLLEGE.**



Photo courtesy of KMB Architects

**69,965**

SQ. FT.

**\$40**

**MILLION**

CONSTRUCTION

**WINTER  
2024**

GRAND OPENING

**STUDENT SERVICES &  
INSTRUCTIONAL BUILDING**

With plans of opening in the winter of 2024, the new Student Services & Instructional Building will provide a welcoming gateway to GHC's campus and will serve as a connecting point between the college and the community.



Photo courtesy of Opsis



## ABOUT THE SSIB

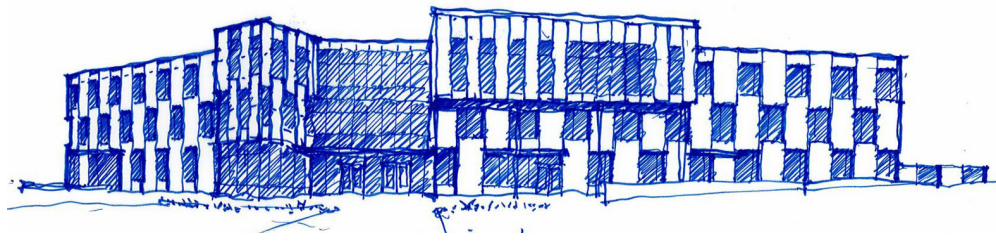
In addition to providing quality education and workforce programs that meet the needs of the local community, GHC strives to provide students with an enriching, fun, and memorable college experience. The Student Services & Instructional Building (SSIB) will be a significant contributor to promote a quality college experience.

The new SSIB will house GHC's Student Services departments. The SSIB will also include a coffee bar, dining area for students, and space for student life.

The top floor of the SSIB will feature a conference center with space to seat up to 550 people, meeting rooms, and instructional spaces.

Accessibility on campus will improve with the addition of the universally accessible building, pedestrian paths, and ADA parking spaces in close proximity to the center of campus.

The SSIB construction has been funded by the State Legislature at \$52 million. Of that, \$48 million is state capital funded by bond sales; \$3.7 million is funded by students through a fee voted on and approved by the student body.



## CULINARY ARTS & FOOD SERVICE

The SSIB will feature a 12,800 square foot culinary space, including a commercial kitchen, that will support GHC's culinary arts program.

Photos on this page courtesy of Opsis.

