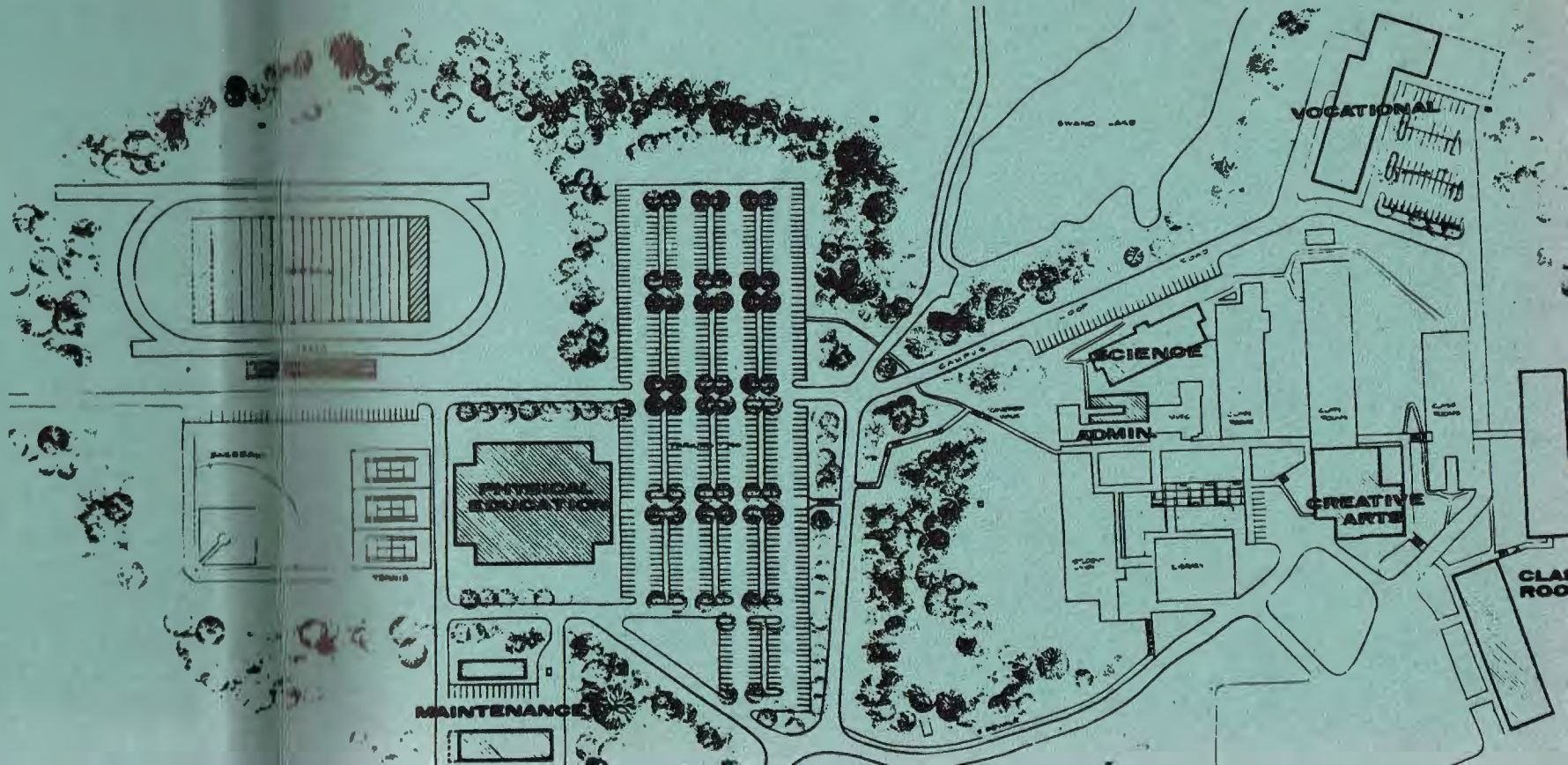
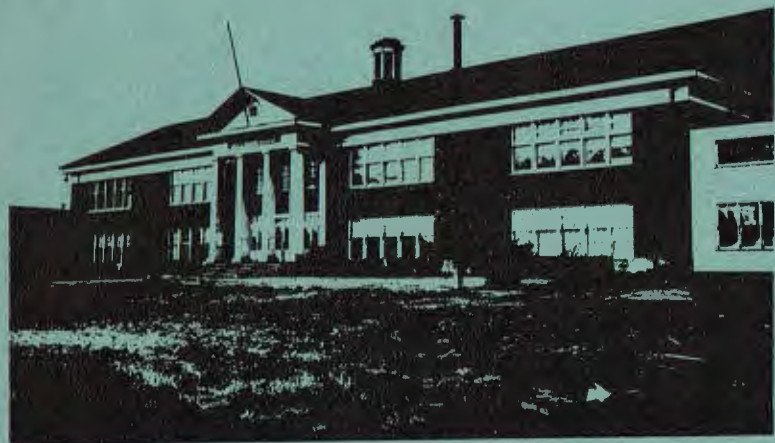
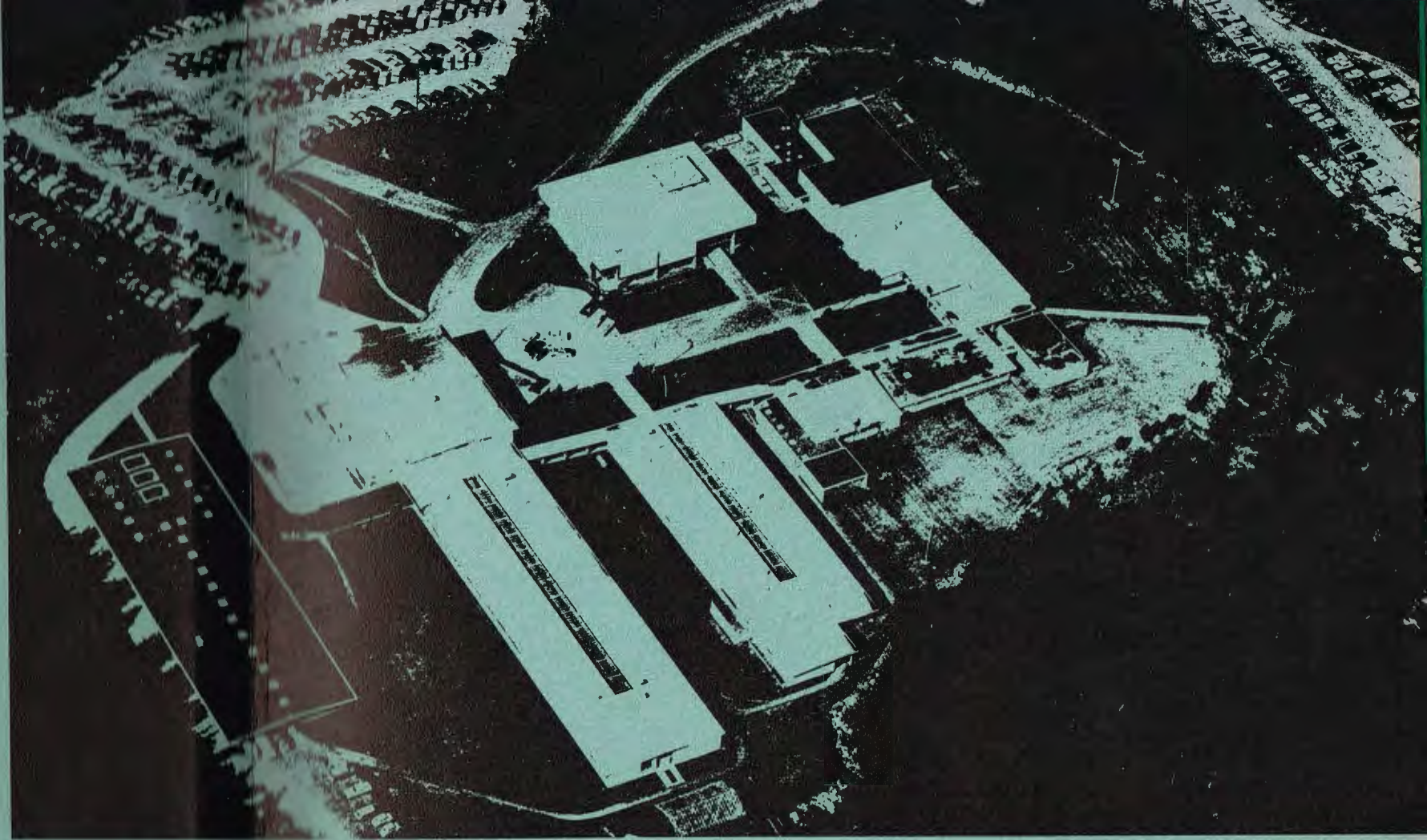


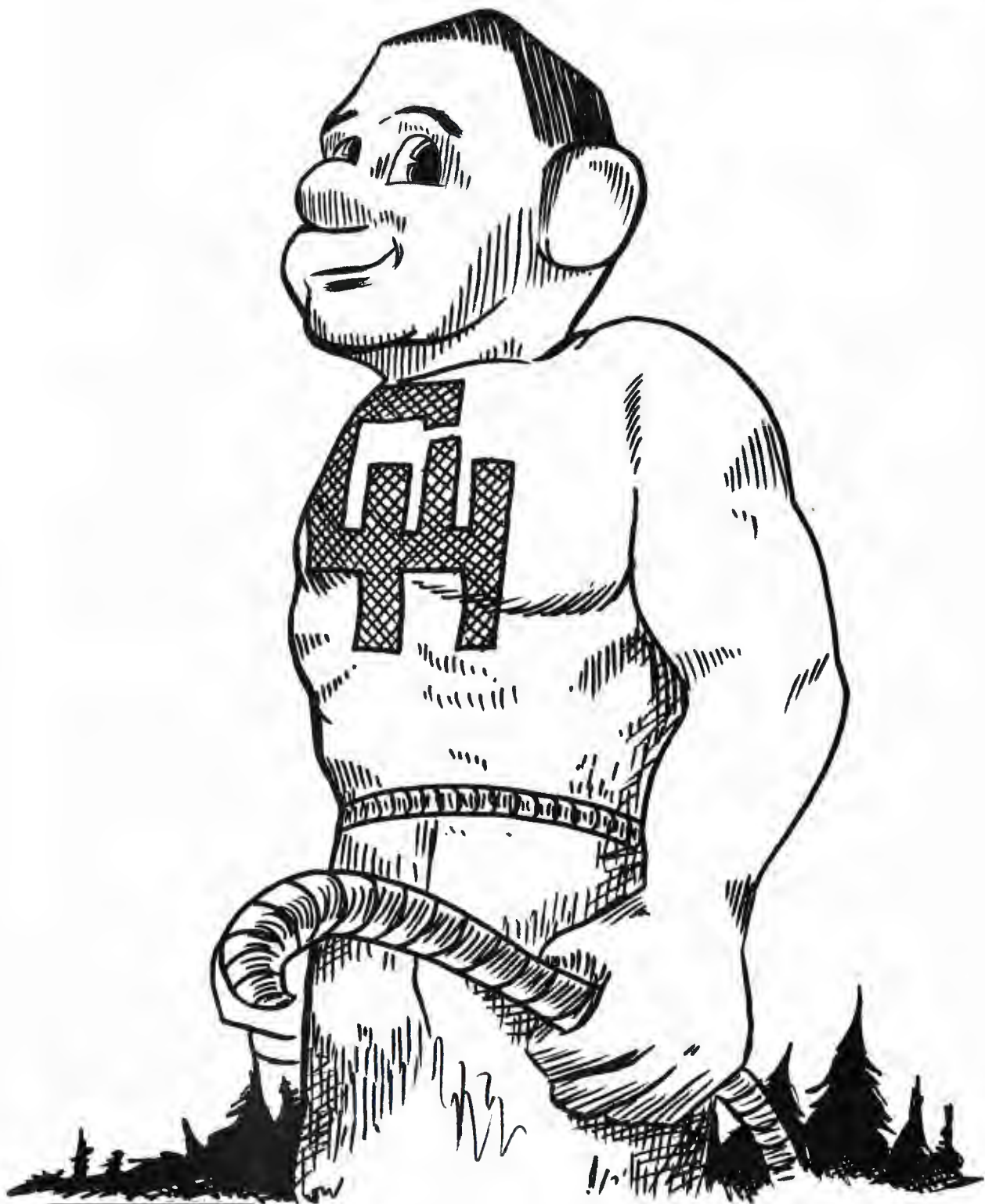
NAUTILUS



1930 - 1970



NAUTILUS



Published by the
Associated Student
Body of Grays
Harbor College



The College Seal

The college seal is a shield of silver bearing a frigate in full sail with a flasque of royal blue on either side bearing tall fir trees in green. The shield rests upon a wide silver band which is bordered by a circle of rope and which bears the name of the college at the top and the date of the College's founding, 1930, with a leaping salmon on either side. On each side between the shield and the band is a spray of cranberries.

The ship stands for Captain Robert Gray's "Columbia." The rope, trees, cranberry spray and fish are symbols of the industry and life of the Harbor.

The seal was designed in 1947, by Esko K. Rentola, a Grays Harbor College graduate.



Ground-breaking
for the
present College
July 1956

The State Board of Education, in 1955, purchased a forty acre tract--the present site of Grays Harbor College. Construction of the new facilities was begun in 1956 on a hill overlooking Aberdeen and Hoquiam, the bay, and in the distance, the Pacific Ocean. Classes opened January 6, 1958 on the new campus. In May 1961, the Choker Union Building was renamed the A.J. Hillier Union Building in memory of Alfred J. Hillier, late professor of history and forensics coach. Remodeling of the Hillier Union Building, the Administration Building, and the addition of the 600 wing in 1964 increased the opportunity for a more diverse and complete education. The year 1966 saw the completion of the new library.

The 1967 session of the State Legislature created the Community College Act which provided for a school district consisting of Grays Harbor and Pacific counties. Governor Daniel J. Evans appointed a Board of Directors: H. James, L. Weinstein, E. Van Syckle, O. Tibbetts, and Dr. W. McKinney.

Thus, over the years, the College has endeavored to serve the young men and women of this area by offering them quality academic, professional and technical programs.

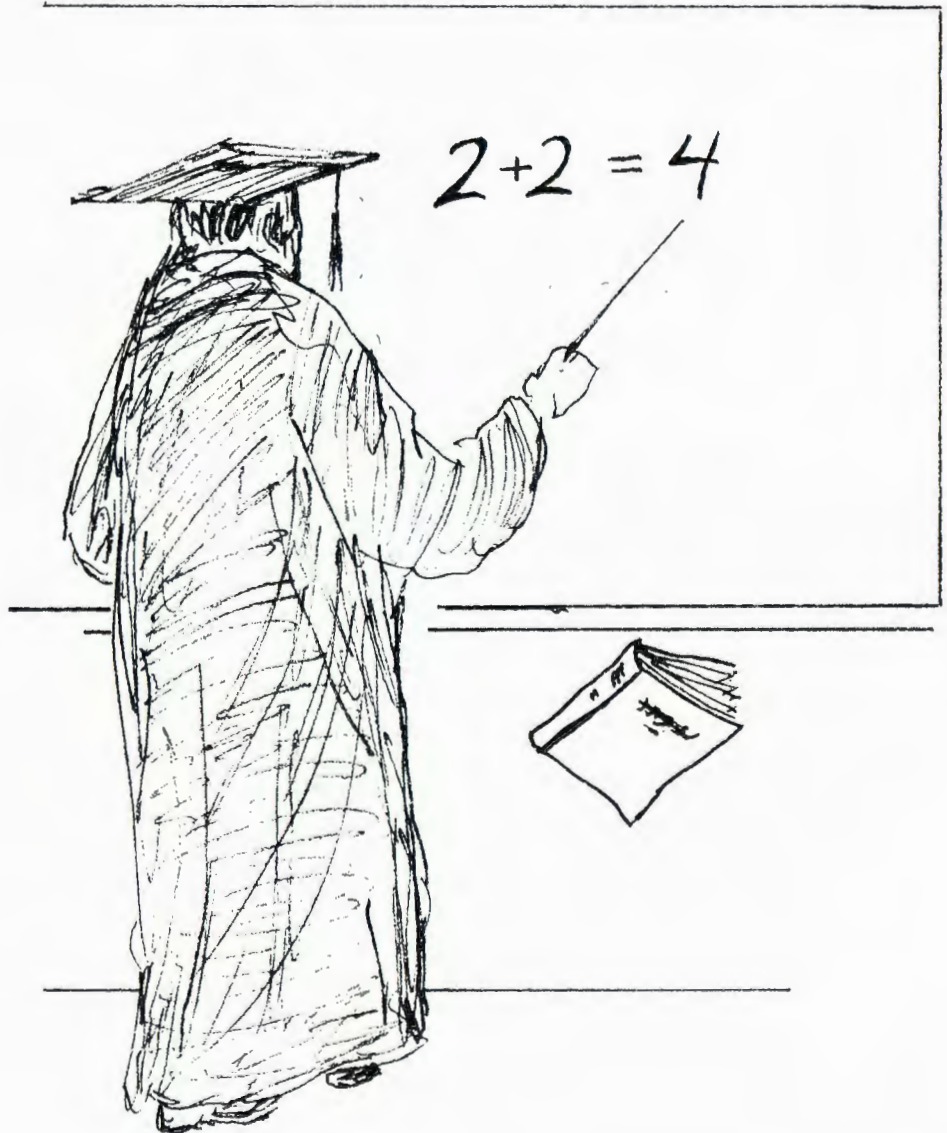


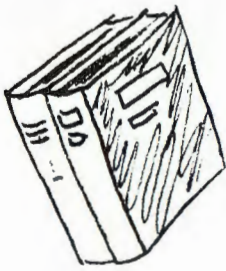
Planning
for the
future
projects
at GHC



Forward	2
Dedication	6
Academics	8
Organizations and Activities	24
Sports	68
Students	90
College Scene	121

Dedication





We, the members of the Nautilus staff, dedicate the 1969-70 issue of the Grays Harbor College Nautilus to the 64 members of the faculty. These people teach in fields ranging from science to foreign language, from history to mathematics.

Some of these teachers, for example Dr. Smith, graduated from Grays Harbor College in the school's younger days, but have since returned to teach at their alma mater. Others are new to this area but all have some basic similarities. All have the same dedication to their profession and a sincere goal, to help the students as best they can. We appreciate all the hard work and time they have devoted to the bettering of us, the students. We also thank these men and women for the wise counseling they have given us in times of need and urgency.



Some of these instructors participate in more than just teaching. Some coach the athletic squads, while others freely give their time to help with plays, the debate team, and other activities. To these, we owe a special vote of thanks, for they keep the social life of Grays Harbor College going its strong tradition. Without this social life, any college would become a very boring place. We hope that the students realize this is only a small part of the credit due to these people and that the individual student is the one who can show the most appreciation. Again we thank the teachers who spend their time and energy for the benefits of the students.

The Nautilus Staff



ACADEMICS





My congratulations to the Nautilus staff for compiling a splendid yearbook. Its pages will always remind me of a year which was remarkably full of pleasant associations.

My best wishes to the graduating sophomores and my sincere hope that each of you will further your education. I was particularly pleased this past year to gain approval of our immediate construction plans. By next year at this time we should see the addition of a much-needed physical science building, a vocational-technical structure, and a counseling wing to our present administration building. This is step one of a long-range construction goal which will provide us with the finest community college facilities in the state. This physical plant staffed by our excellent faculty will give every student the opportunity to receive the finest education.

My thanks to all of you for making this year a successful, cooperative venture.

Edward J. Smith

BOARD OF TRUSTEES

During the 1967 session of the State Legislature, the Community College Act was initiated which provided for a school district consisting of Grays Harbor and Pacific counties. To serve as Board for this district, Governor Daniel J. Evans appointed a group of five men.

They are:
Harry James
Lawrence Weinstein
Edwin Van Syckle
Oliver Tibbetts
Dr. William McKinney



Smith, VanSyckle, Weinstein, Tibbets, James, McKinney.

Administration



John Killian
Business Manager



Cyrus Gonigam
Bursar



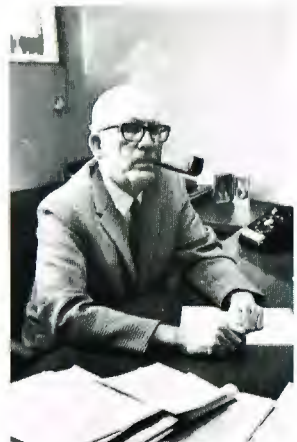
Eldon Odle
Registrar



Richard Frost
Dean of Instruction



Jeane Jones
Director Guidance
Dean of Women



Maurice Phipps
Director of
Student Affairs

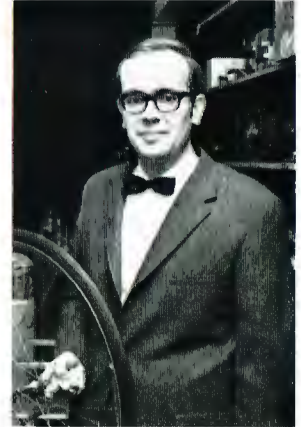
FACULTY



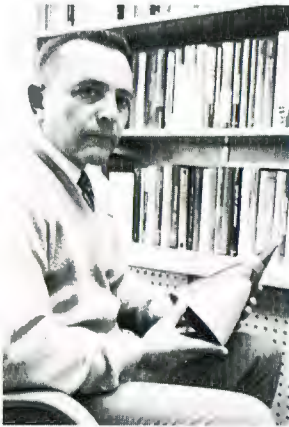
James Bicknell
Biology



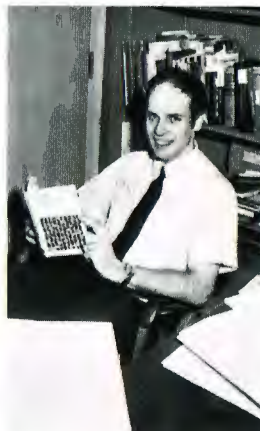
Harry Beeler
Physics



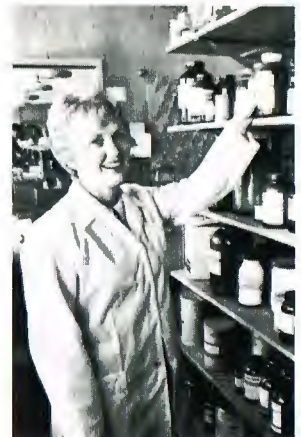
George Branson
Physics



Vincent Aleksey
Mathematics



Edwin Akerson
Data Processing



Pansy Bray
Lab Assistant



Robert Basich
PE, History



Gale Brighton
Clerk-Stenography



Donald Butler
English



Peter Dufour
Political Science



Richard Frazer
Geography, PE



Robert Gehrke
Psychology



Leo Hake
Psychology



Lionel Brown
Sociology, Anthropology



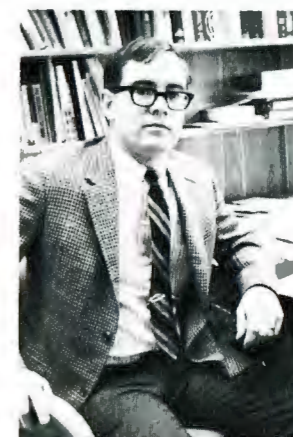
Donald Cates
Reference Librarian



Harold Enrico
Foreign Languages



Gary Fray
PE



James Griffith
Sociology



Margaret Hansen
Economics, B.A.



Polly Brown
Health, PE



John Crew
History



Raeburn Hagen
English



Alfred Izatt
Electronic Technology



Ralph Koal
Math



Kenneth Leach
Counseling, math



Shirley Lundstrom
Secretarial



Richard Landberg
Art, Judo



Louis Messmer
Biology



Richard Lane
Speech, Drama



Maxine L'Ecuyer
English



Robert Neisinger
Music



Helen Pagels
Helena Smith
Music



Lyman Pedersen
History



Lydia Roberts
Voice



Myles Robinson
Biology



Dorothy Savage
English



Joseph Scott
Business



Harold Kellogg
General Office



James Phipps
Geology,
Oceanography



Dale Potter
Chemistry



Jack Stoddard
Athletic Director

Edward Stricker
Chemistry



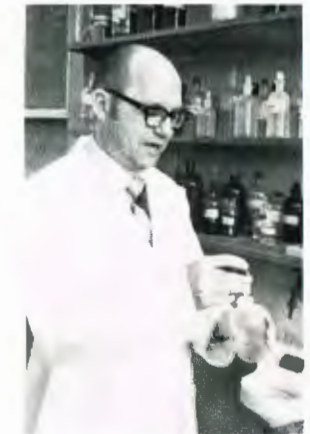
Ronald Swartz
Engineering, Math

Marvin Tennefoss
Mid-Management

Russell Scott
Speech, English



H. Winfield Shaffer
Electronics



John Smith
Biology



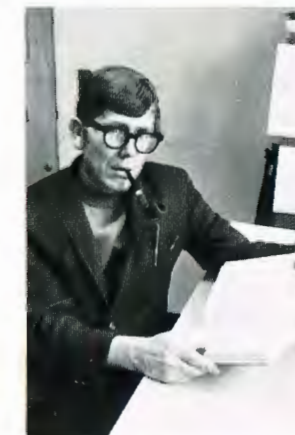
John A.F. Spellman
Librarian



Eugene Stensager
Music, Philosophy

Kenneth Stevens
Data Processing

Donald Stensland
Geology





James Thrasher
PE, Coaching



Roy Udem
Mathematics



William Van Vector
English

Elmer Wagner
Russian, Counselor



David Waller
English, Counselor



Craig Wellington
Education, Music



Virginia Younger
English



Bookstore



Bernadine Hermann, Anne Mayton, Mary Guthman, Janet Lachiondo

Library



Yvonne Fields, Alice Delaney, Bebe Anne Scott, Bonnie Kalinowski

Business Office



Muriel Moore, Donna Kulich, Elnora Cote



Kay Evans



Henrietta Blaine, Annamae Williams, Margaret Hatfield, Phyllis Hyde

Cafeteria, Custodians & Maintenance



Anita Sundstrom, Delores Sackrider, Prudy Olsen, Mary Epperson, Josephine Frye, Estelle Gisbrecht



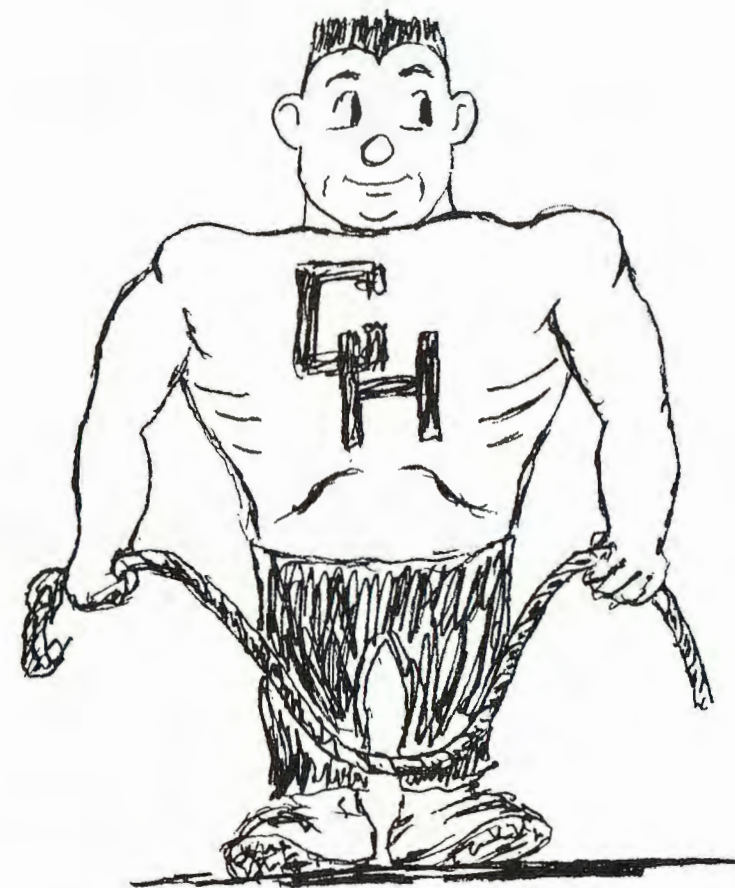
Scotty Lynden, George Jugum, Anne Krulich, Urabell Miller, Don Morrow.

Sam Kilmer, Heston Weyrich, Ernest Aschim, Hjalmer Klock



ORGANIZATIONS

& ACTIVITIES





Student Council

Towards the end of the Spring Quarter, a president, a vice-president, a secretary, and a treasurer are elected from the student body. To these individuals is added the associated women's student body president. These elected officials then choose a publications commissioner, a publicity commissioner, a forensics commissioner, a social commissioner, an Instructional Council Representative, and a Washington Association of Community Colleges Student Government Representative. To complete the council the student body elects two freshman representatives at the beginning of the Fall Quarter.

With these components, the Student Council attempts to meet the demands of the students. Thanks to the interest and co-operation of the students, we were able to achieve the following accomplishments: increased recreational facilities in the HUB, earlier library hours, and additional physical education classes.

As far as activities, the Student Council has been very enthusiastic this year. They have helped in the obtaining of representation on the Instructional Council and have planned a WACCSG Conference. Along with these functions, they have been busy revising by-laws, publishing a Charlie's Chatter, writing a News Letter, organizing a scrap book, and planning an activities budget for the school year.

It is our hope that we have served you to your strongest desires. Whether we have, or have not, we would like to thank you for giving us a chance to try.

We would like to give special credit to our advisor, Mr. Phipps, whose patience, understanding, and encouragement have been a real help to us throughout the year.

Club Coordinating Council



The Club Coordinating Council, composed of all the clubs on campus and the vice president of the Student Body, serves to coordinate club activities. This year an effort was made to increase the cooperation of Student Council and the CCC.

Fall Social and Homecoming Week are examples of the work the CCC did.



AWS

Upon enrollment in Grays Harbor College, all women students automatically become members of the Associated Women Students. This organization is designed to promote the general welfare of the women students.

Girl of the month: Each month the AWS Council recognizes the outstanding girl of the month. She is chosen for her participation in school activities, scholarship, courteousness, ambition and sportsmanship. **Girl of the Year:** At the annual Mother's Tea an outstanding girl student is chosen by a vote of all the women students as their Girl of the Year.

Ayudas

Ayudas is a service club for men and women who desire to be of assistance to the college. Their major project is the sales of tickets at athletic events.

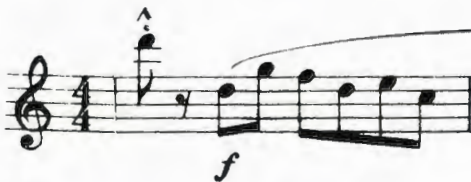




Band

Browley, Richard
 Campbell, Vickie
 Carlson, Steve
 Carter, Bell
 Daneker, Richard
 Dubois, Elsie
 Ekman, Rich
 Gozart, Al
 Gunter, Kathy
 Hardy, Joan
 Hatten, Hollis

Izlitser, Hal
 Kalso, Barb
 Lachel, Paul
 McPherson, Randy
 May, Bill
 Nelson, Joe
 Newman, Bill
 Peeples, Gene
 Schlott, Stephani
 Vukich, Joseph
 White, Ruth



Vocal Ensemble

Anderson, J. Wesley
 Asikainen, Dawn
 Best, Becky
 Blaine, Roger
 Gillham, David
 Henke, Judy
 Hensley, Gladys
 Howell, Shirley
 Pierson, Ed
 Short, Mark
 Southard, Bob

C h o r u s

Anderson, J. Wesley
Asikainen, Dawn
Baker, Mel
Best, Becky
Blaine, Roger
Bodwell, Tom
Borden, Mary
Burr, Janice
Church, Jo Ann
Cozzutto, Adriana
Davies, Constance
Dubois, Elsie
Eldred, Henry
Fitzpatrick, Janet
Frost, Bev
Gillham, David
Gonigam, Phyllis
Gunter, Kathy
Guthman, Mary Anne
Hake, Gayle
Hann, James
Heikkila, Eric
Henke, Judy
Hensley, Gladys
Hieronymus, Sam
Howall, Shirley
Kalso, Barbara
Lachel, Paul
LeCompte, Tom
Lentz, Suzanne
Levering, Margaret

Levering, Martha
May, Bill
McElravy, Sam
McGuire, Sheryl
Meeder, Bonnie
Morehead, Cathy
Moss, Richard
Newman, Bill
Odle, Barbara
Pearson, Donna Jean
Pierce, Frances
Pierson, Ed
Polloi, Justa
Profitt, Bill
Reiter, Mike
Rickey, Gailyn
Robinson, Henry
Scott, Claire
Shay, Gloria
Short, Mark
Smathers, Kathy
Southard, Bob
Strachan, Bernard
Strode, Dan
Swearington, Gary
Thompson, Donald
Totten, Terry
Warren, Ken
Wines, Candy
Wonhoff, Greg



C h o k e r e t t e s



Go
Team

Under the leadership of President Carol Ramisky, Chokerettes enjoyed a very active year. In support of the Choker athletes, the coeds painted pep signs and formed rooting sections at the games. A giant GHC rocket adorned the Chokerettes float in the Homecoming parade. To climax the years activities, the members enjoyed a steak dinner.

DELTA PSI OMEGA

DELTA PSI OMEGA is the national dramatic fraternity for community colleges. The Grays Harbor College Players affiliated with this organization ten years ago, and as a chapter they have sought to support and maintain theatre in the college community. This year the G.H.C. chapter sponsored a delegation to the Northwest Drama Conference held in Eugene, and participated in a Community college festival in Bellingham. At their recognition banquet held in May, they once again awarded certificates of achievement to performers and directors selected from high school and community theatres in the college district.





Democrats

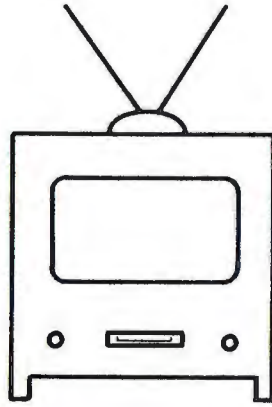
Its purpose is to foster the ideals of the Democratic party, to assist the Party in state and national elections. It is the intent of the Young Democrats to have a voice in local, state and national party activities including the participation in caucus, selection in delegates to the state and national conventions.

During the year 1969-70 the Young Democrats hosted a state wide convention at Ocean Shores of the Young Demo's. In addition, it has sponsored several campus speakers including the Forum on Viet Nam in which opinions were solicited from many sources.



Eltek

The Electronics club offers a lifetime membership to ELTEK majors and interested GHC students. It actively participates in school activities and takes one or two field trips each year to electronic industries of particular interest. Members have acquired used TVs and other equipment, repaired them and auctioned them to students and staff to support a scholarship offered to a second year ELTEK major.



Engineering



This year the executive branch of the engineering club was as follows: Kenneth Phelps, President; Karl Lundquist, Vice-president; Fred Bennet, Treasurer; Ron Merkle, Secretary; and Phillip Pentilla, Publicity Chairman.

The club built a float for Homecoming, sponsored a faculty pool tournament, chose a candidate for Miss Merry Christmas, held a dance, and officiated a paper airplane contest. Activities also included a field trip to a well-known company Oregon.

Engineering club of 1969-70 will be remembered for their brilliantly "engineered" entry in the SWEA bed race during Homecoming fun days.

Hiking Club

The Grays Harbor College Hiking club was established to give Grays Harbor students an opportunity to take advantage of outdoor recreation. With the feature of possessing unlimited areas for exploration, the Hiking club remains active throughout the year. Beaches, river valleys, glacier covered mountain peaks---all the wonders and magnificence of nature are in their grasp. Covering trails in the Cascades and Olympics, the members enjoy both day and overnight hikes.





C l u b

H i s t o r y

"The Grays Harbor College Historical Club" was organized in 1957 to give students a way to express their interest in history.

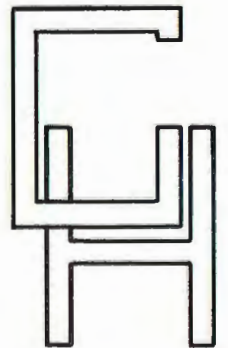
The members take field trips to historical sites in the Northwest. Club meetings in which historical events are discussed, guest speakers are invited, and the club's activities are planned, are held twice monthly with the assistance of the club's advisor, Dr. Pederson.

Under the capable leadership of President Marilyn Langham, Vice President Keita House, Secretary Carmen Hoggatt, and Treasurer Steve Huhta, the club besides regular activities, sold "Charlie Choker" Buttons, entered a ghostly trio in the Homecoming parade, and sponsored History Week.

Lettermen



The Lettermen's Club was active before the 1969-1970 school year even began. They helped purchase the pool table, the foos ball game, and the shuffle-board game which are presently situated in the HUB. The Lettermen also participated in the Homecoming festivities and sponsored a Miss Merry Christmas candidate.





Mid- Management

Every Business Management student is encouraged to be active in the Mid-Management Club of Grays Harbor College. The club is recognized by the Student Council and annually participates in local, state, and national conferences. Through club activities, students have an opportunity to meet and exchange ideas with leading businessmen of the community.

M u s i C l u b



The Music club was just organized this year and it is comprised of students who are interested in music at GHC. Some of this years activities included publication of concerts and sending some Grays Harbor College music majors to the Music Educators Association Convention. Mr. Wellington was our advisor this year.

PHI RHO PI

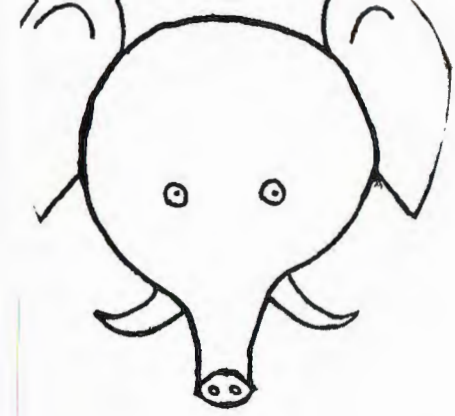
PHI RHO PI is the debate and forensic fraternity for community colleges across the country. The G. H. C. Chapter, founded by the late A.J. Hiller in 1947, was the first Phi Rho Pi chapter in the entire northwest. In order to qualify for membership, a student must have competed in intercollegiate forensic tournaments. In the fall, the local chapter sponsored a High School Speech Tournament on the G.H.C. campus, which was participated in by 150 high school speakers from Southwest Washington.



PHI THETA KAPPA



Phi Theta Kappa, the National Junior College Honor Fraternity, is represented on the Grays Harbor College campus by Beta Iota Chapter which was chartered in 1932. Phi Theta Kappa recognizes and promotes excellence in scholarship. This year the local chapters many activities included manning the concession stands at athletic events, maintaining a tutoring service, serving at the local high school's honors banquet, and sending delegates to the organization's national convention and the 1970 honor's institute. Those serving as officers were: President Jackie Burkhalter, Vice President Rick Lynn, Secretary Nancy Bovec, Treasurer Deborah Pierson, Historians, Karen Gaidrich and Denise Fuher.



Republicans

The Republican Club is open to all students. The club affords opportunity to students to participate in political events, to become better acquainted with local, state, and national leaders, and to feel a part of shaping the nation's future.





Ski Club

Any student interested in skiing, no matter what his ability, can join the Ski Club. The club makes one-day outings on weekends during the season and has at least one two-to-four day trip during one of the vacations. It is an excellent way for skiers to meet and enjoy their common interest.





Sports Car Club

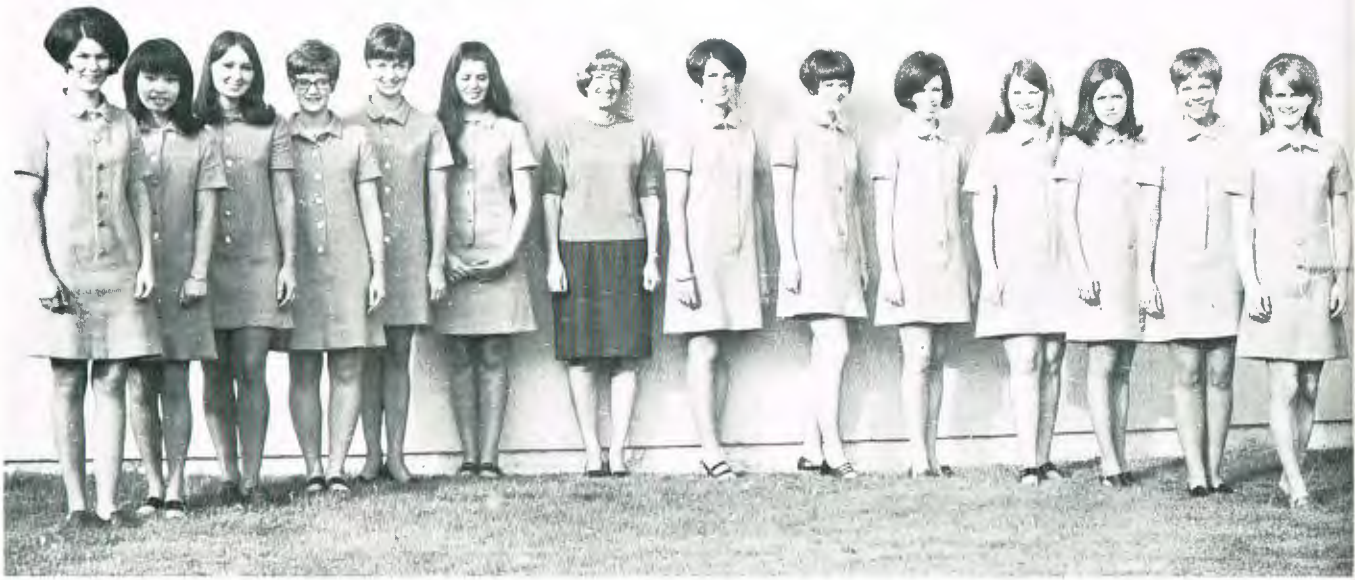
The Grays Harbor College Sports Car Club was formed, early in the Fall Quarter of 1969, by a group of students interested in promoting sports car activities and general interest on campus. The club is open to any student who is interested in sports cars, or enjoys driving for competition or fun. There are a variety of cars and drivers enrolled in the club. In all, there about 25 active members. The club has a goal of putting on one Autocross, DNE Rally, and one Tour each year. The club advisor is Mr. Schaeffer, and the officers for the 1969-70 school year are: President, Dan Dugas; Vice-president, Glenn Luther; and Secretary-Treasurer, Greg Druzianich.

S. W. E. A.

The Student Washington Education Association is an affiliate of the Washington Educational Association and the National Educational Association. The purpose of the organization is to promote professionalism among education students, to interest students in the teaching profession, to foster the development of student leadership, and to provide the membership with the benefits of S.W.E.A. and affiliated organizations.

S.W.E.A. broke into Homecoming activities this year with their sponsorship of the First Annual Bed Race. S.W.E.A. was declared the winner by rolling their bed to decisively beat Engineering club, whose bed was logically strong but structurally weak. GHC students can look forward to seeing this activity become the main attraction during future Homecoming activities.





Tyee

The Tyee Society is an organization composed of not more than fifteen sophomore women students who are chosen on the basis of personality, scholarship, demonstrated leadership, and initiative. This society is primarily a service club. The members help with registration, usher at and assist with college functions. They also hold money-raising activities to provide a needy family with Thanksgiving dinner, contribute to "Toys for Tots," purchase a gift for the school and grant a scholarship.

Associated Veterans

The Associated veterans of GHC numbering over 100, were formed in the spring of 1968. The Association was formed to aid returning veterans in readjusting socially as well as scholastically and to promote the best interests of its members and to be of service to the college and the community. On January 10th, officers of all campus veterans associations throughout the state met at Ellensburg to form a state association for potential representation of 14,000 student veterans.

The local association of veterans is establishing a loan and scholarship fund for veterans. Officers for the current 1969-1970 school year are: Tom Gadwa, president; John Pearson, vice president; Mrs. Bonna Wright, secretary-treasurer; and George Elting, publicity. Advisors are: R. Gehrke and R. Koal.





H. Givens
K. Gaidrich

M. Stensager
D. Blecha

G. Maloney
S. Lentz

P. Cabe
J. Burkhalter

H. Rodgers
C. Bristol

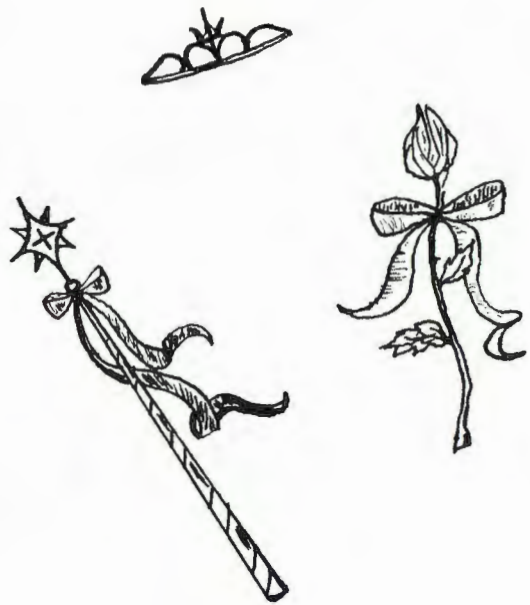
Homecoming

Court



Q
u
e
e
n

S
u
z
i





H
o
m
e



C
o
m
i
n
g





G



H



C



M.U.N.



This year, Ireland was represented by ten Grays Harbor College students through the Model United Nations (MUN) program, which was held April 15-19 on the University of Oregon campus.

The ten students will compose Ireland's delegation and of these, one was elected delegation chairman.

Delegates included: Darrell Prowse, Marvin Smith, Brad Parks, Wayne Hughes, Fran Pierce, Shellaine L. Erickson, Maryann Messmer, Jeff Jorden, Paul Hann, and Steve Crumb. Peter Dufour, GHC instructor, was advisor to the delegation.

Drift



Dunes



Mother's



Tea



The Associated Women of Grays Harbor College
cordially invite you to be their guest at their
Annual Mother's Tea
motif to be a
'Hawaiian Luau'
on Sunday, the third of May
in the Hilliard Union Building
Social Hour 1:00 to 2:00 p.m.
Program 2:00 p.m.

NAUTILUS



Barbara Elliott
Journalism
Public Relations

Editor-in-chief
Asst. Editor
Sports Editor
Photographers

Artists

Reporter
Advisor

Doug Rinehart
Marilyn Fosjack
Kathy Harper
Randy Ainsworth
Allan Transue
John Workman
Mike Sturgill
Jackie-joan Rottle
Barbara Elliott



TIMBERLINE



The Timberline is published bi-monthly during the Fall, Winter, and Spring quarters as the official publication of the Associated Students of Grays Harbor College, Aberdeen Washington, and printed in Shelton, Washington, by the Shelton-Mason County Journal.

Editor-in-Chief
Assistant Editor
News Editor
Sports

Women's Editor
Features
Photographers

Varitypist
Advisor
Reporters

Jackie-joan Rottle
John Bender
Darrell Prowse
Scott Johnson
Sam Hieronymus
Kathy Harper
John Workman
Randy Ainsworth
Steve Flagg
Vicki Johnsen
Barbara Elliott
Gene Christiansen
Stella Gudyka
Dennis Ransdell

R
o
y
a
l

G
a
m
b
i
t



The Inspector General







A. Sutton
October



C. Trohimovich
November



D. Marxen
December

G
i
r
l
s
o
f
t
h
e
M
o
n
t
h

E. Frost
January



P. Evensen
February



J. Krlevich
March



J. Rottle
April



M. Cannon
May



Scholars of the Month



D. Pierson
November



N. Borovec
December



A. Suttin
January



S. Turnbull
February



J. Zieroth
March



S. Huta
April

E. Locke
May

GRAYS HARBOR COLLEGE
BAND AND CHOIR
IN CONCERT

- CHAMBER BAND**—Robert Weisinger, Director
- SPIRITUAL** from Symphony #54-----Don Gillis
- ALLEGRIA**-----Robert Pearson
- RAKES OF HALLOW "Irish Suite"**-----Leroy Anderson
- DIVERTIMENTO FOR BAND**-----Vincent Persichetti
- First movement—"PROLOGUE"-----Clifton Williams
- Second movement—"SONG"-----Caesar Giovanni
- Fourth movement—"BURLESQUE"
- MARCH LAJAR**-----
- ALLA BAROCCO**-----
- CONCERT CHOIR**—Craig Wellington, Director
- SACRED**-----Randall Thompson
- ALLELUIA**-----W.A. Mozart
- LACRYMOSA** from "Requiem"-----Joseph W. Jenkins
- SECULAR**-----Samuel Barber
- FA LA!**-----
- SURE ON THIS SHINING NIGHT**-----
- MADRIGAL SINGERS**-----
- SO WELL I KNOW WHO'S-----
- MATONA, LOVELY-----
- CONCERT CHOIR**-----
- FOLK**-----

MONTOIA

The World Renowned
Flamenco Guitarist

...is a PHENOMENON!
...SUCH CONSUMMATE ARTISTRY IS A RARE EXPERIENCE!
...TO THUNDEROUS APPLAUSE!
...WORTHINESS IS SIMPLY UNDENIABLE!
...A URBANE EXCITING STAR!



THE NORMAN LUBOFF CHOIR

Grays Harbor
Civic Choir and Symphony

PRESENTS

Haydn's Creation

FIRST METHODIST CHURCH—ABERDEEN



SPORTS





This year's GHC football team was one that captured the first 'official' state championship and smashed school records. The title came after gaining the Western division crown and beating Spokane, the Eastern division winner 16-12.

Boasting the best offense team in Grays Harbor's history, the Chokers ran up 3,994 yards on the ground and through the air, while piling up 256 points.

While 1969 was an offensive year throughout, the defense rose to the occasion in the championship game against Spokane. The defenders held the Spartans on the one foot line to preserve the victory. 1969 was a year of great team efforts in that the Chokers had to battle from behind to win in five of their 10 games.

Many Chokers were named to the All-League team. Named to the first team were John Lugveil, Greg Sempel, Mike Rodgers, Ken Warren, Gary Bowles, Greg Maloney, Gary Swearingen, and Rick Dodds. Named to the second team were Terry Totten, Bruce Spencer, Bruce Barker, and Dan Strode. Those who made Honorable Mention were Dan Archer, Tom Bodwell, Bill Campbell, Bill Potter, Phil Paladay, Steve Crumb, Ron Smith, and Jerry Linnenkohl. Special Awards were awarded to Mike Rodgers, Honorary Captain; Phil Peterson, Field Captain; Steve Crumb, Inspirational; Bruce Barker, Defensive award; John Lugveil, Blocking award; and Phil Palady, Coaches award.

Gary Bowles carried the ball 209 times and gained 1,143 yards, a new school record. Mike Rodgers threw the ball 208 times, completed 108 for 1,316 yards and 18 touchdowns, a new school record. Ken Warren, GHC's JC All-American candidate, caught 54 passes for 841 yards and 14 touchdowns, a new school record. Warren also finished second in the state scoring race with 82 regular season points.

State Champs

How They Did It

GRAYS HARBOR	39	Olympic	21
GRAYS HARBOR	36	Everett	16
GRAYS HARBOR	28	Walla Walla	18
GRAYS HARBOR	8	Yakima	26
GRAYS HARBOR	38	Wenatchee	13
GRAYS HARBOR	26	Columbia Basin	13
GRAYS HARBOR	21	Spokane	19
GRAYS HARBOR	6	Everett	24
GRAYS HARBOR	36	Olympic	12

State Championship Playoff

GRAYS HARBOR	16	Spokane	12
--------------	----	---------	----



Team Standings

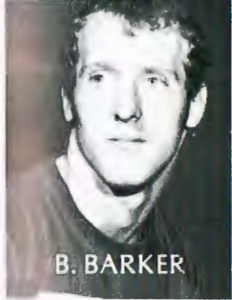
Western Division

	Conf.			Season		
	W	L	T	W	L	T
GRAYS HARBOR	5	1	0	8	2	0
Olympic	2	4	0	3	6	0
Everett	1	5	0	4	5	0

Eastern Division

	Conf.			Season		
	W	L	T	W	L	T
Spokane	5	1	0	7	3	0
Yakima	5	1	0	6	3	0
Col. Basin	3	3	0	5	3	0
Wenatchee	0	6	0	0	9	0





B. BARKER



T. BODWELL



G. BOWLES



R. DODDS



J. LUGVIEL



P. PALADAY



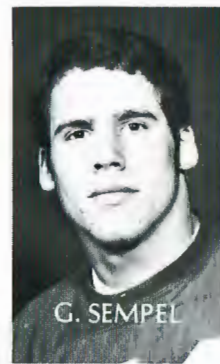
S. CRUMB



B. POTTER



M. RODGERS



G. SEMPEL



R. SMITH



D. STRODE

Chokers of the Week



G. SWEARINGEN



T. TOTTEN



K. WARREN



R. WEATHERBY



Weatherby scampers for yardage as coach Thrasher looks on.



Warren hauls in a pass as defenders move for tackle.



Rodgers throws an aerial for one of his 108 completions.

Bowles strikes in the center of the line.



Choker Basketball Squad

The Grays Harbor Choker basketball team compiled a 12-13 season record and finished a close sixth in the conference race. Coach Bob Basich took over the head coaching position for the retiring Jack Stoddard, who moved up as Athletic Director, and had the Chokers in the playoff picture until the final weeks of the season.

Seven sophomores closed out their eligibility at Grays Harbor including Paul Hann, Tom Bodwell, Pat Foley, Cal Fowler, Keith Reynvann, Leroy Hale, and Steve Crumb.

Despite the less than impressive record, it was an exciting season for Choker fans. The final two regular season wins over conference leaders, Clark and Lower Columbia gave the Chokers a two game winning streak to take into next year.

Keith Reynvann, John Basich, Coach Basich, Steve Crumb, Mike Stoddard, Leroy Hale, Calvin Fowler, Steve Philpot, Pat Foley, Tom Bodwell, Martin Kay (manager), Paul Hann, Bill Potter.



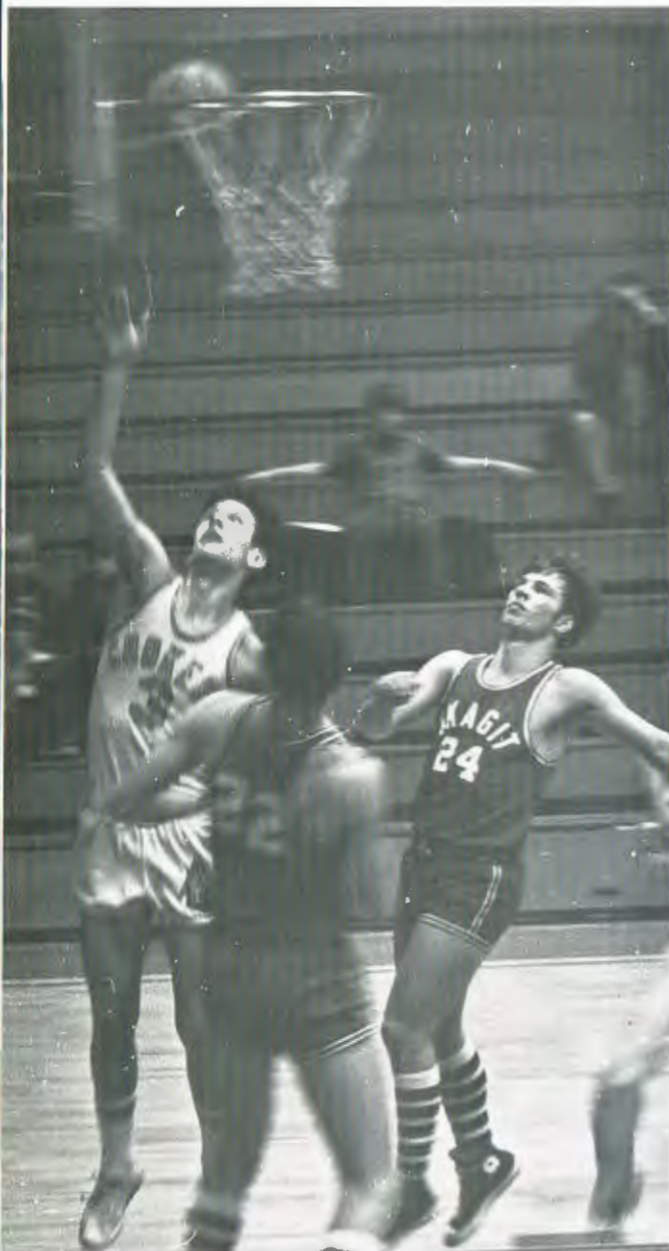
Season Record

GHC	92	St. Martins	100
GHC	89	St. Martins	71
GHC	84	Shoreline	68
GHC	64	Edmonds	97
GHC	88	Portland St.	93
GHC	92	Everett	72
GHC	74	Skagit Valley	75
GHC	48	Oregon St.	77
GHC	67	Centralia	59
GHC	75	Portland St.	81
GHC	83	Peninsula	91
GHC	87	Bellevue	78
GHC	96	Seattle	66
GHC	69	Lower Columbia	81
GHC	78	Clark	94
GHC	74	Shorline	82
GHC	79	Edmonds	73
GHC	85	Everett	59
GHC	104	Skagit Valley	94
GHC	101	Peninsula	115
GHC	103	Centralia	75
GHC	81	Bellevue	82
GHC	80	Seattle	82
GHC	74	Lower Columbia	73
GHC	77	Clark	74

Team Standings

Coastal Division	Conf.		Season	
	W	L	W	L
Peninsula	17	3	21	5
Lower Columbia	16	4	19	7
Clark	15	5	19	7
Seattle	13	7	15	9
Edmonds	12	8	13	13
GRAYS HARBOR	11	9	12	13
Bellevue	10	10	10	16
Skagit Valley	7	13	10	16
Shoreline	5	15	7	19
Centralia	3	17	4	20
Everett	1	19	1	24

Basich lays one in.



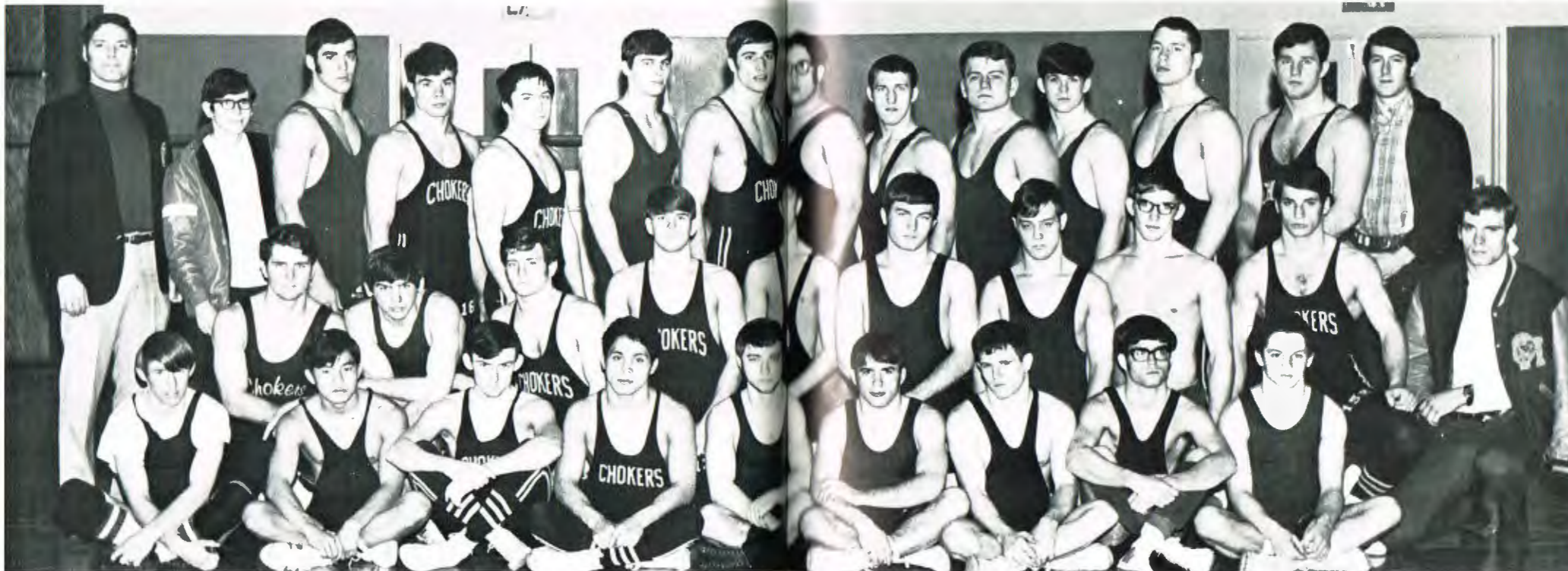
Reynvaan shoots difficult shot while Hale (15) sets for rebound.



Bodwell connects from underneath.

Matmen Take Fourth

State Title



(ROW 1) Dan Byres, Dave Abe, Tim Stevens, Rueben Baca, Ivan Vanderhia, Chuck Smith, Arlin Weller, Ray Crenshaw, Jerry Hunter. (ROW 2) Jerry Elliot, Bill Kostenborder, Don Walkinshaw, Bob Shipley, Jeff Jordan, Mike Buchendorf, Roger Thomas, Paul Justin, Phil Paladay, Ken Ames. (ROW 3) Coach

Frey, Roger Goodwin, Ron Cruse, Ed Quintasket, Greg Leonard, Don Grim, Sam Hieronymous, John Swirzcki, Hollis Hatten, Terry Totten, Dave Bossard, Gary Stalick, Dan Strode, Merle Schuler.

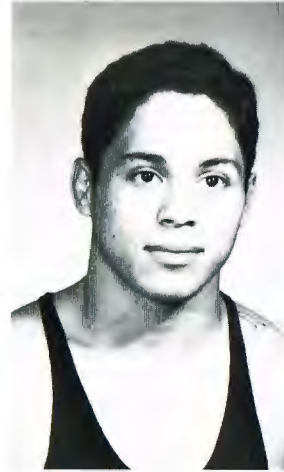
For the fourth consecutive year, the Grays Harbor College grapplers reign as kingpins of the State Wrestling Tournament. The Chokers rolled up an outstanding 13--1 dual meet record with the lone defeat coming at the hands of Highline, 20--12.

Leading the Chokers to their state title were Sam Hieronymus, Phil Paladay, Gary Stalick, and Dan Strode who picked up individual championships. Rueben Baca and Bob Shipley claimed runner-up spots while Don Walkinshaw grabbed third and Greg Leonard took fourth. Hieronymus and Strode were undefeated as Chokers and Strode has only one loss to his name in all competition.

Bob Shipley received the Most Takedowns Award; Dan Strode, Most Pins Award; Bil Kostenborder, Most Improved Wrestler; Rueben Baca and Phil Paladay, Coaches Award; Sam Hieronymus, Inspirational Award; and Greg Leonard was chosen to captain next year's wrestling squad.

GHC	28	Clackamas	13
GHC	34	Olympic	8
GHC	20	Clackamas	14
GHC	22	Columbia Basin	12
GHC	39	Yakima	3
GHC	39	Skagit	3
GHC	23	Everett	12
GHC	26	Spokane	9
GHC	32	Walla Walla	18
GHC	12	Highline	20
GHC	20	Green River	14
GHC	36	Centralia	6
GHC	28	Clark	12
GHC	48	Lower Columbia	0

RUEBEN BACA



DAVE ABE



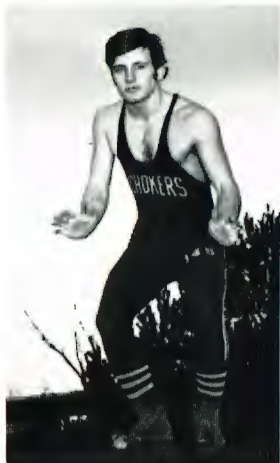
BOB SHIPLEY



STATE ENTRANTS

Dave Abe	118
Rueben Baca	126
Bob Shipley	134
Don Walkinshaw	142
Phil Paladay	150
Greg Leonard	158
Sam Hieronymus	167
Jerry Elliot	177
Dan Strode	190
Gary Stalick	Hvy

DON WALKINSHAW



JERRY ELLIOT



PHIL PALADAY



INDIVIDUAL PLACERS

- 1st: Dan Strode
Gary Stalick
Phil Paladay
Sam Hieronymous
- 2nd: Rueben Baca
Bob Shipley
- 3rd: Don Walkinshaw
- 4th: Greg Leonard

STATE TEAM SCORES

GARY HARBOR 89, Green River 72, Columbia Basin 60, Highline 45, Yakima 35, Walla Walla 31, Clark 25, Everett 19, Olympic 9, Spokane 3, Skagit Valley 3, Lower Columbia 1.

GREG LEONARD



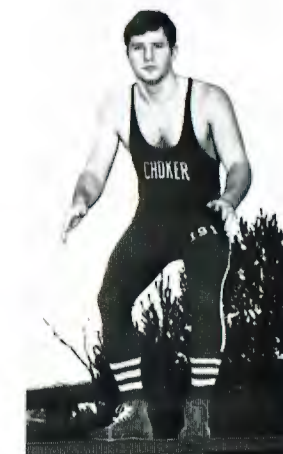
GARY STALICK



SAM HIERONYMUS



DAN STRODE





P
e
p

S. Lentz M. Phipps P. Evensen B. Kalso D. Matisons



S
t
a
f
f





G O l f



*FRONT ROW: Scott Johnson, Don Norkoski, Martin Kay.
BACK ROW: Greg Segai, Mike Stinebough, Gary LaCroix,
Mike Reiter, Coach Aleksy.*



Track

Though the Choker track team had a far from spectacular season victory-wise, the squad ended with a commendable and building season. The team did not secure any dual meet titles but did place many individuals high in standings. Always consistent were the winning performances of veterans Gary Bowles, Bill Wilson, Gene Avey, and John Mobray. With the help of several promising freshmen, the team ended a very personally satisfying season.



ROW 1 Jack Weber, Gene Avey, Lennie Habersetzer, Jerry Simon, Bill Wilson, Willie Lee. *ROW 2* Gary Bowles, Dan

Piper, Coach Frey, Steve Huhta, John Berry, Lee Goodin, Bernie May, John Mobray



Sam Hieronymus, John Mihovilich, Mike Bassett, Jim Drake

Tennis

Grays Harbor College's tennis team was very youthful and inexperienced. They entered into thirteen dual matches with very little success but the whole squad gained valuable experience as the season progressed. Two Chokers, Mike Bassett and John Mehivolich, entered the State Tennis Championships but didn't place. These two players will form an excellent nucleus for next seasons squad. The team was coached by Mr. Stoddard.



ROW 1 Vern Haerling, John Basich, Keith Reynvann, John Godfrey, Bruce Myers, Jerry Bayless, Frank Naish, Bruce Maupin. ROW 2 Coach Thraser, Joe Nelson, Phil Curtis,

Jerry Linenkohl, Ed Korst, Jerry Schaffer, Dennis Hopkins, Bill Campbell, Bob Beck, Jerry Schroeder.

Baseball

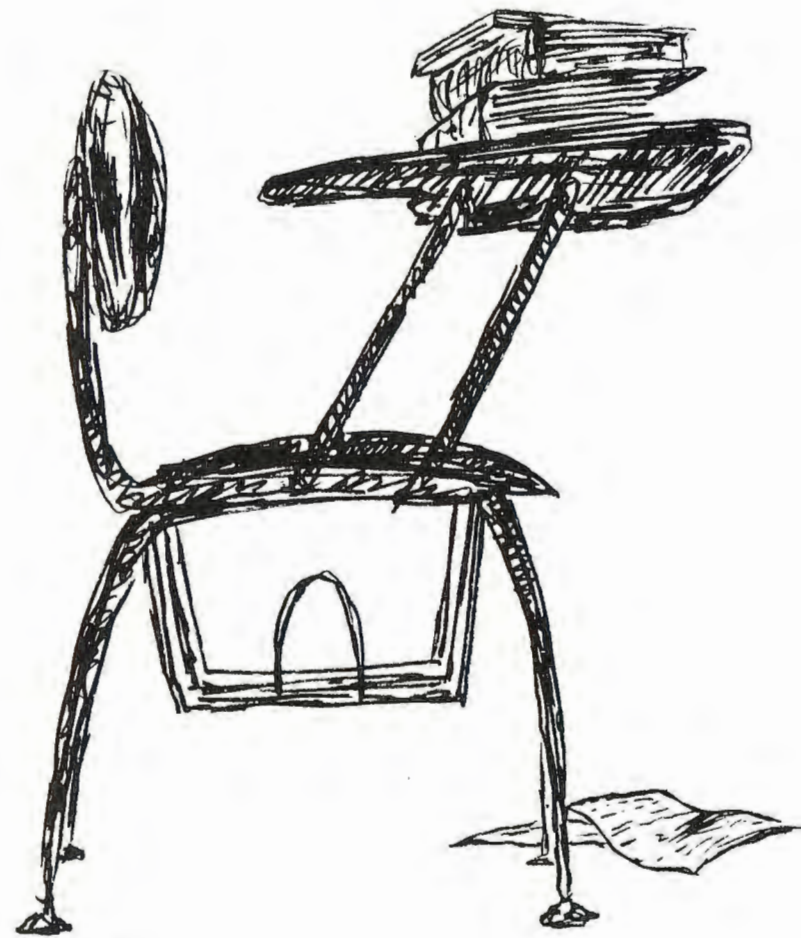
The 1970 Choker baseball team was the surprise of the Western Division. With an unheralded pitching staff, the Chokers made up what they lacked with team effort and inspirational leadership under the first-year helmsman Jim Thraser.

Weather was the strongest contender for the team. But when they did play, they played with class. Jumping off to a quick lead, the swatsmen lead the league for most of the season. The highlight being a sweep of a doubleheader at home against Lower Columbia, eventual State Champs.

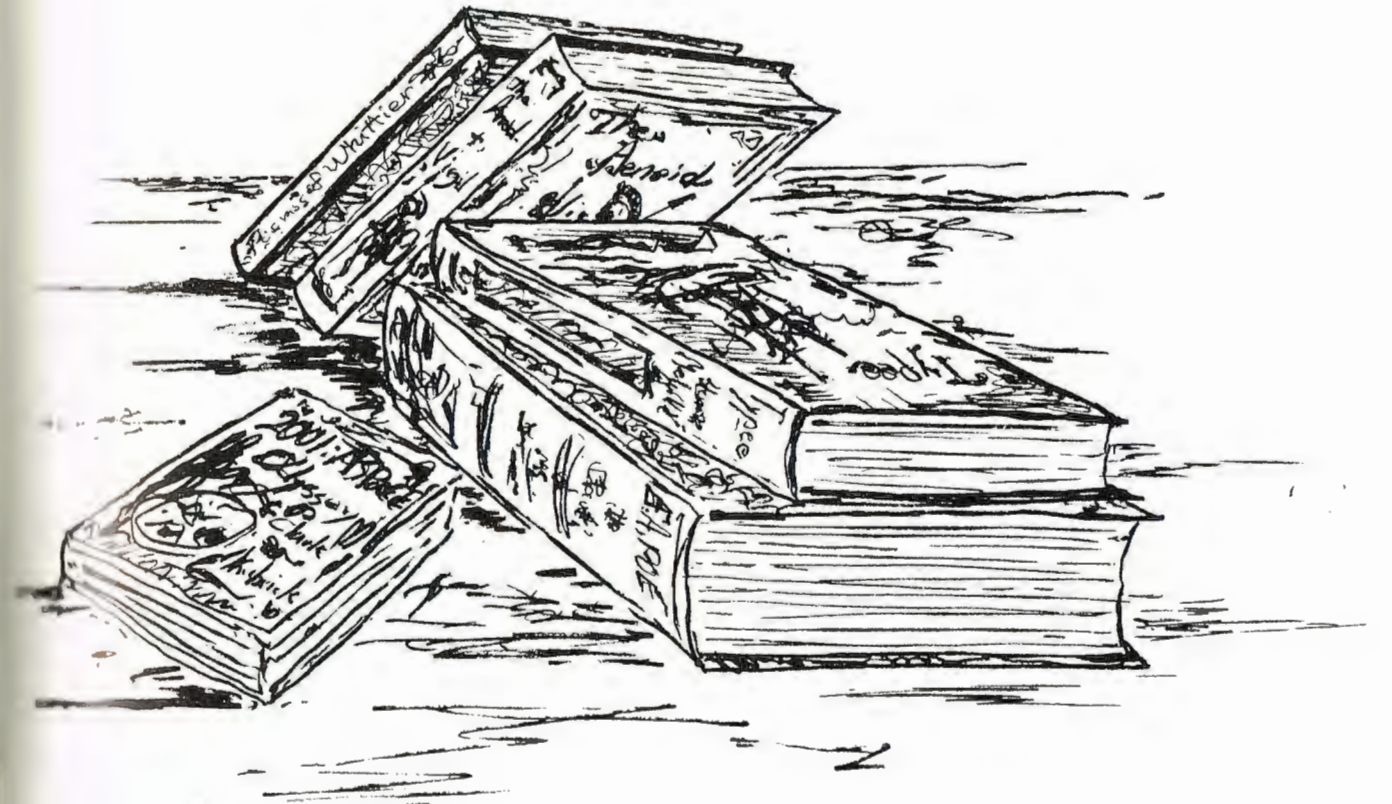
Good hitting, polished fielding, a fine group of freshmen, and the experience of lettermen Jerry Bayless, Jerry Schroeder, Bruce Maupin, and Jerry Shaffer were instrumental in the Choker victories.

The season ended in a tie with LCC at 9-5 each. Lower Columbia won the playoff game 6-3.

STUDENTS



& CLASSES





Shirley Baker, Sharon Bernard, Alice Bowman, Barbara Briscoe, Wendy Carlson, Maxine Donahue, Kathryn Doubek, Florence Freeland, Dawn Garrett, Bonnie Hoener, Cathi

Kelchner, Janet McGrath, Marilyn Moon, Janis Nyronen, Gladys Ochsner, Mildred Pickett, Jeanelle Ranum, June Wilson (Class Members) Mrs. Adams (Instructor)

Licensed Practical Nurses

Practical Nurses, along with the Department of Business Administration, are associated with the Department of Vocational Education. These classes have been installed to give persons a chance to learn a vocation or job. It is hoped that in the coming years, this will be expanded to take in such fields as auto-mechanics, wood working, and sheet metal working. Others will probably be instituted later. This is a start in combatting the problems related to persons not knowing what to do on a job.

Clerk - Stenography



Loretta Parker, Mary Ellen Brewer, Lucile Kulisich, Merilee Kamboukas, Lelani Shale, Sue Scott, Lois Gardener, Iva Randall, Eunice Lane, Sherry LaFreniere, Laurie Harris, Sandi Morrow, Ruth Foss, (Class Members).

General Office

Viola Malone, Julie Lenz, Billie VanBeek, Luella Schultz, Bernice Ludwig, Dixie Laughlin, Betty Tjernberg, Linda Glenn, Eileen McAlister, Pat Seaman, Arlene Norkool, (Class Members).



Sophomores



R. AINSWORTH



J. ALLISON



K. ANDREWS



N. ANENSEN



C. ASANUMA



J. ARNDT



R. BACA



B. BARKER



J. BECK



F. BENNETT



D. BLECHA



M. BRIGHTON



J. BURKHALTER



R. BETTENCOURT



S. BOWMAN



S. CALHOUN



J. BINKS



N. BOROVEC



B. BROWN



M. CANNON



B. CHAPMAN



E. CHILSON



S. CHINN



M. CUTTS



R. DEWING



G. DRUZIANICH



D. CHURCHILL



C. COLEMAN



H. COLLINS



L. DUDLEY



V. DUNNING



D. DUGAS



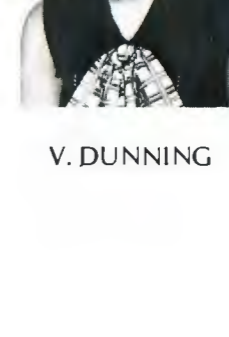
N. CRISWELL



A. COZZUTO



B. DUNSMOOR



D. ELLIS



T. CRONE



F. CROWDER



P. CURTIS



G. EMBERLEY



M. EPPERLY



S. ERICKSON



G. ESPEDAL



P. EVENSEN



P. FOLEY



R. GILBERT



H. GIVENS



M. GUTHMANN



M. FOSJACK



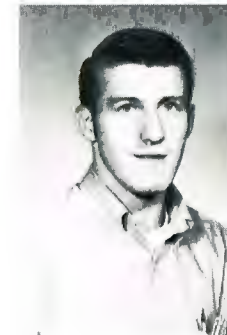
A. FOSTER



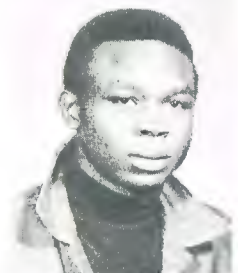
R. FOSS



G. HACKNEY



H. HATTEN



L. HALE



C. FOWLER



D. FRIEDT



D. HARLAN



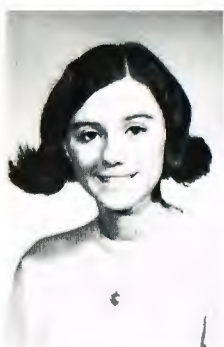
E. HEIKKILA



T. GADWA



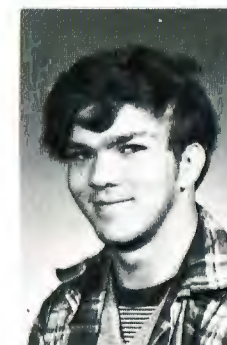
K. GAIDRICH



A. GATESON



J. HENKE



C. HILL



V. HILL



D. HODGES



C. HOWARD



W. HUGHES



B. KALSO



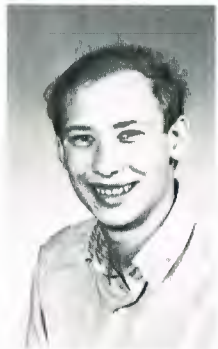
B. KANICK



J. KUSKY



G. HUNTINGTON



R. JOHANSEN



M. JARMIN



G. LACROIX



R. LACROIX



R. JOHANSEN



L. JOHNSON



R. LANGER



D. L'AMIE



M. LANGHAM



E. JONES



A. JUA-THES



R. JUNTUNEN



K. LARSON



M. LAVINDER



C. LEE



S. LENTZ



M. LE VERING



M. LIGNOSKI



A. MAIL



V. MADISON



J. MANWELL



E. LOCKE



K. LUNDQUIST



C. LOOMIS



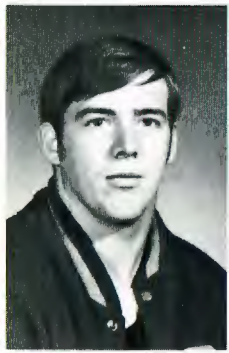
B. MARIANO



J. MATHIES



D. MARXEN



J. LUGVIEL



J. LUOTO



D. MATISONS



B. MAUPIN



R. LYNN



R. MC CARTY



S. MC ELRAVY



J. MCGOWEN



S. MC GUIRE



M. MC KAY



B. MC MANUS



R. MERKEL



M. MILLER



C. NARRANCE



J. NEVITT



B. NEWMAN



M. MILLER



M. MILLICAN



S. MILLER



L. NOTT



P. PALADAY



G. OAR



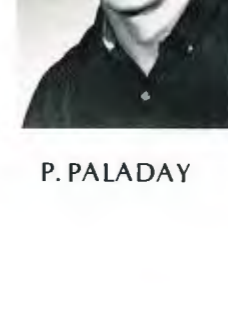
J. MOBRAY



P. MORROW



B. PARKS



D. PARKS



D. MOSS



R. MULLEN



F. NAISH



D. PARKS



B. PATNODE



B. PEASE



P. PENTILLA



P. PETERSEN



K. PHELPS



E. QUINTASKET



C. RAKOSKI



C. RAMISKEY



F. PIERCE



D. PIERSON



L. REED



P. REED



N. PIGOTT



E. PIERSON



C. POSEY



D. RICHARDSON



R. REEVES



D. RINEHART



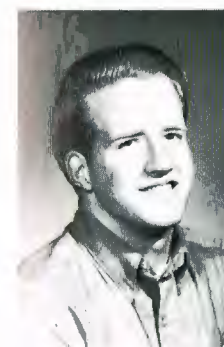
J. PRATT



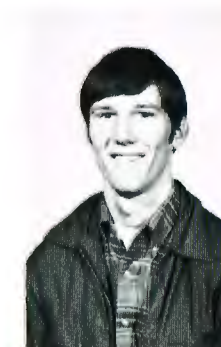
B. PROFITT



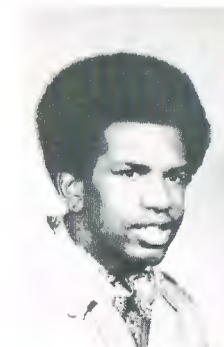
B. QUINBY



R. ROBERTS



D. ROGERS



H. ROGERS



S. ROMANE



J. ROTTLE



C. RUSSELL



W. SHUCKA



B. SHUMATE



H. SIMS



M. SAJEC



G. SALME



J. SCHROEDER



M. SMITH



K. SMATHERS



D. SANDIFER



J. SALOMA



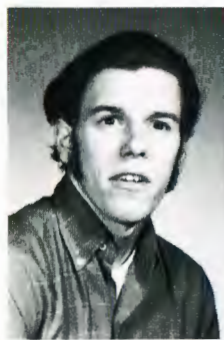
B. SARVINSKI



R. SMITH



M. SOWERS



W. SCHUTZLER



C. SCOTT



G. SEGAI



B. SPENCER



G. STALICK



M. STAMON



G. STEVENSON



M. STINEBOUGH



B. STRACHAN



T. TOBIASON



T. TOTTEN



R. TOWNS



T. STRADA



P. STRUMSKI



D. STRODE



W. TOY



S. TURNBULL



A. TRANSUE



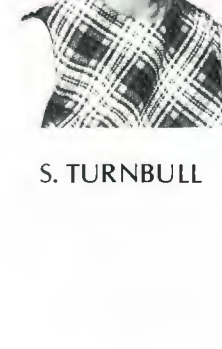
M. STURGILL



C. SUMMERS



J. TUTTLE



K. VAN ROOY



J. SUTHER



A. SUTTIN



B. SUTTIN



P. VENES



S. VOGEL



R. WEATHERBY



T. WETZEL



A. WHITACRE



R. WHITE



R. WHITEMAN



B. WILLIAMS



P. WILSON



C. WINES



G. WONHOFF



G. WRONA



R. YORK



C. ZAHLLER



J. ZIEROTH

Freshmen



B. ALEXANDER



P. ATKINSON
G. BARLIN
A. BARRY



J. BASICH



J. BECK
S. BECKETT
L. BEERBOWER



K. BELL



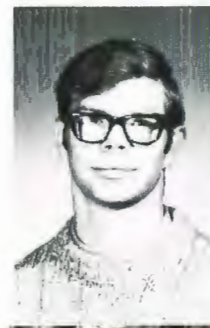
J. BENDER
J. BERRY
C. BILLINGS



T. BLAND



C. BOGDANOVICH
R. BOWERS
D. BOSSERT





R. BRAWLEY
P. BROWN
G. BRUNT

M. BUCKENDORF



N. DOBOS

R. DODD
W. DONALDSON
M. DOYLE



D. BURKE
J. BURR
S. CARTER

T. CARTY



S. DOZEMAN

J. DRAKE
K. DUBOIS
G. DUNKEL



E. CHARETTE
J. CHURCH
G. CLAPSHAW

R. CLAYPOOL



N. EKLUND

R. EKMAN
D. EMBREE
D. FALK



A. COOK
J. COTEY
R. CRENSHAW

R. DANEKER



C. FITTERER

S. FLAGG
B. FROST
B. FOSTER



A. DANIELS
E. DEADY
L. DE LATEUR

J. DELIA



R. FRAZIER

S. FRY
M. FURU
C. GIESE





D. GILLHAM
M. GIVENS
C. GOOD

C. GRANGER



C. HOGGATT

A. HOLT
S. HOOD
K. HOUSE



S. GRANT
D. GRIM
G. GRUBISICH

S. GUDYKA



T. HRANAC

J. HUNTER
B. JENKINS
B. JOHNSON



R. HAGFORS
G. HAKE
W. HAMPTON

J. HANN



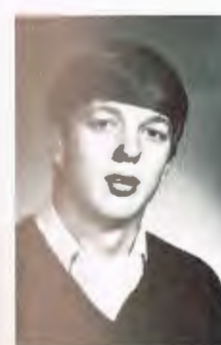
C. JOHNSON

S. JOHNSON
N. JONES
S. JONES



J. HANSEN
J. HANSON
K. HARPER

B. HATTEN



J. JORDEN

P. JUSTEN
M. KINNEY
J. KNUDSON



A. HAYES
D. HAZELQUIST
P. HEIKEL

S. HERMSEN



J. KRALEVICH

L. LANGER
D. LEA
L. LEAD





T. LE COMPTE
G. LEONARD
S. LEWIS

J. LIBBY



J. MOREHEAD

L. MYERS
S. NELSON
G. NEWMAN



P. LOZAR
G. LUTZ
M. MAKI

M. MANN



H. NORQUIST

T. NOTT
T. NOYES
S. OGREN



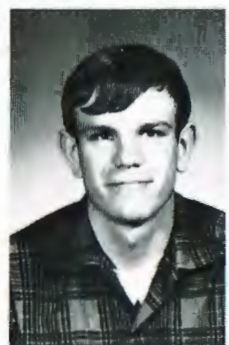
T. MARTIN
T. MASON
A. MAYTON

J. MC CARTHY



E. OLSON

R. ORAM
D. ORR
J. OSBORN



M. MC KINNEY
J. MC MENEMY
G. MERRIN

M. MESSMER



D. OVERBY

D. PARKER
G. PARMLEY
N. PEARSELL



J. MIHOVILICH
C. MILLER
D. MILLER

C. MOREHEAD



S. PHILPOT

D. PIPER
J. POLLAI
M. POULOS





D. POSTMA
W. PRATT
D. PROWSE

G. PRUYN



K. SIESE

J. SIMON
C. SMITH
D. SPENCER



V. REDDING
B. REICHTER
N. RICH

G. RICKEY



T. STEPHENS

M. STODDARD
B. STUTE
B. TAYLOR



M. RIDGEWAY
E. RIENKS
C. RINEHART

C. ROSS



D. THOMPSON

G. THOMPSON
R. THOMPSON
W. TOMLINSON



J. RYAN
D. RYDMAN
R. SAMPSON

C. SCHOENING



C. TROHIMOVICH

S. TUENGEL
S. TURNBULL
S. UEDA



G. SHAY
B. SHIPLEY
M. SHORT

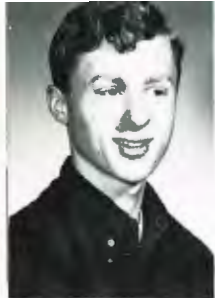
G. SHRIVER



I. VANDEHEI

C. VANDER LINDEN
H. VAN DE WALL





B. VAUGHN
S. VESSEY
T. VETTER



B. WORMSTEDT



S. WATTS
C. WEEDS
D. WEST



L. WHITE



T. WILCOX
R. WILLIAMS
S. WILLIS



E. WOODEN



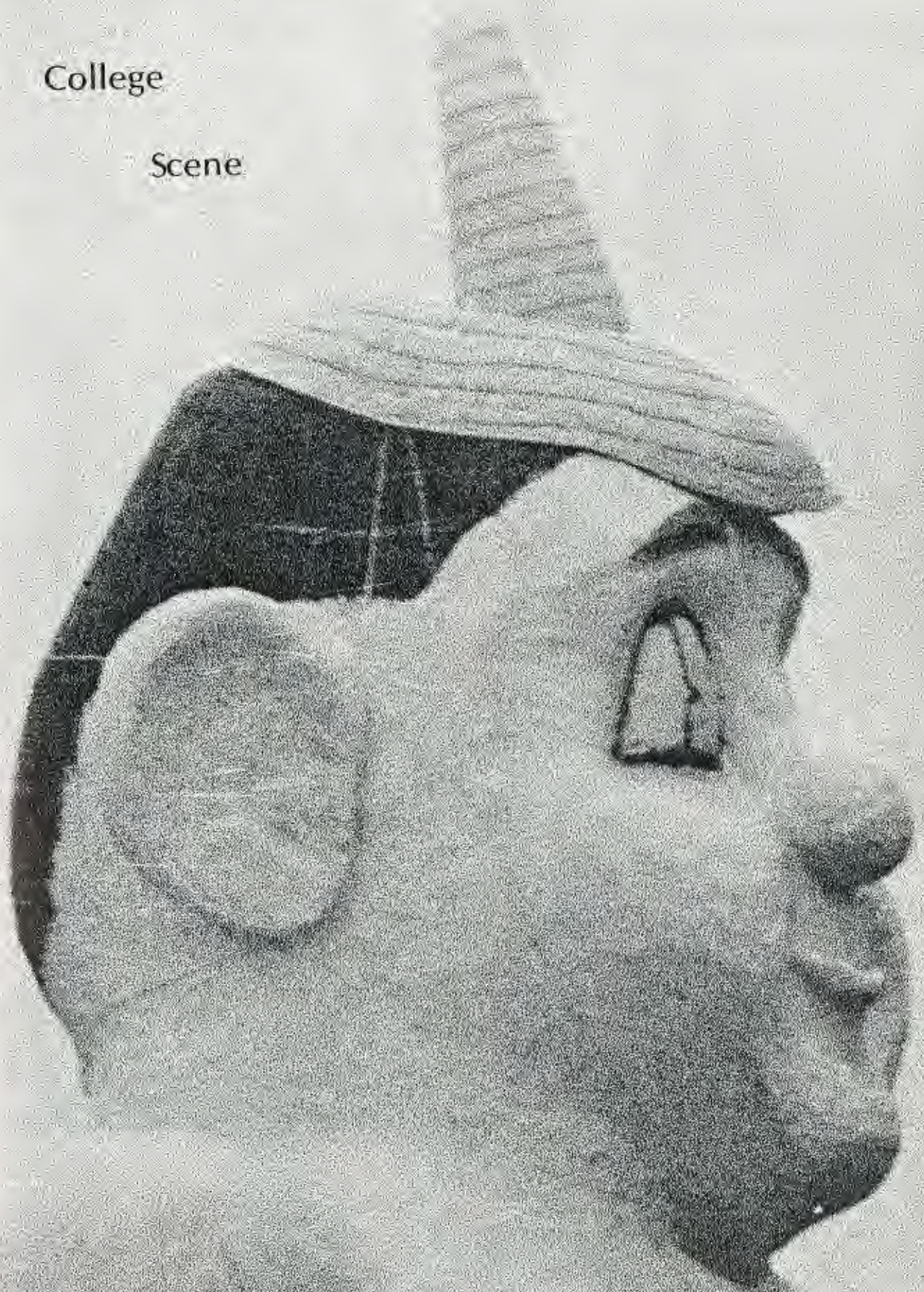
G. WOOD
J. ZEMBAL
S. ZEEP



P. ZIMMERMEN

College

Scene



Your Own Graffiti Page

RICH'S PORTRAIT STUDIO

110 South 'H'
Aberdeen, Washington

532-9412



SPAR BILLIARDS AND RESTAURANT

216 E. Heron
Aberdeen, Wash.
532-8580



WAUGH'S MEN'S STORE

110 East Heron
Aberdeen, Washington

533-3880

COMPLIMENTS

S. H. KRESS AND CO.

Aberdeen, Washington

PAY 'N' SAVE

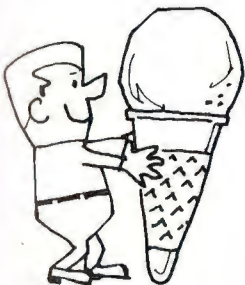
Wishkah and Broadway
Aberdeen, Washington

533-0361



Weyerhaeuser

QUINN'S DAIRY BAR



412 S. Boone
Aberdeen, Wash.
532-1428

Twin Harbors
Area

532-7110

CITY REXALL DRUG

Wishkah and 'I'
Aberdeen, Washington

532-5182

WALT FAILOR'S
SPORTS CENTER

Aberdeen and Westport

STEIN'S MENS STORE

208 East Heron
Aberdeen, Washington

533-0922

SCHMID'S
ARTIC FUR

106 East Heron
Aberdeen, Washington

BOOK CARNIVAL

309 E. Wishkah
Aberdeen, Washington

533-4070

BIRL ADAMS
FOOTWEAR

105 E. Wishkah
Aberdeen, Washington

532-7960



117-119 West Wishkah

532-8684



WISHKAH AT H — 532-9253

pearson's
heron & i streets - aberdeen wash

AXLAND-O'HARE

111 East Wishkah
Aberdeen, Washington

533-3961

DUNSIRE PRINTERS

204 East Wishkah
Aberdeen, Washington

532-8791



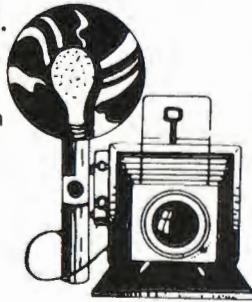
COX CABLEVISION

218 East Wishkah
Aberdeen, Washington

JONES PHOTO CO.

123 South 'I'
Aberdeen, Washington

532-8940



BRENNAN'S

112 East Wishkah
Aberdeen, Washington

532-4933

Wolff's

Established 1897

ABERDEEN, WASH.

Browers

200 East Heron Street

SMOKE SHOP



207 E. Heron
Aberdeen, Washington

532-0670

LESLIE'S STUDIO

210 East Wishkah
Aberdeen, Washington

532-7360



WIITAMAKI

JEWELRY STORE, INC.

215 East Wishkah
Aberdeen, Washington



Simpson and Oak
Aberdeen, Washington

533-5757

Penneys
ALWAYS FIRST QUALITY

your key . . .

TO

GREATER VALUES

Broadway and Heron
Aberdeen, Washington

533-0710

KAUFMAN SCROGGS

FURNITURE

Heron and Broadway
Aberdeen, Washington

532-0630

ACKNOWLEDGEMENTS: I would like to give special thanks to the photographers who made this yearbook possible: Leslie's Colour Studio, Rich's Portrait Studio, Jones Photo Company, Ainsworth Photo, and Bezzo Photo.

